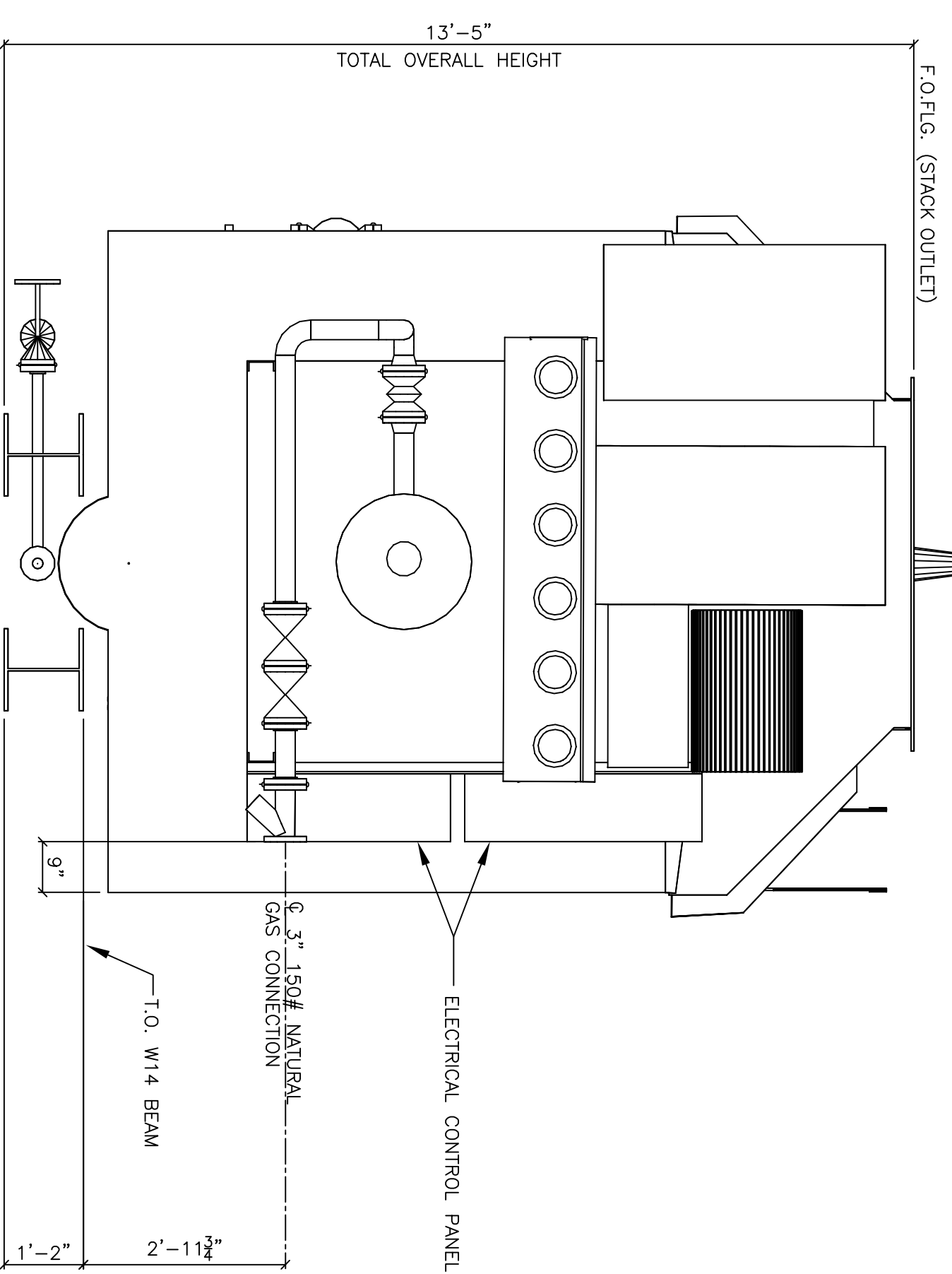
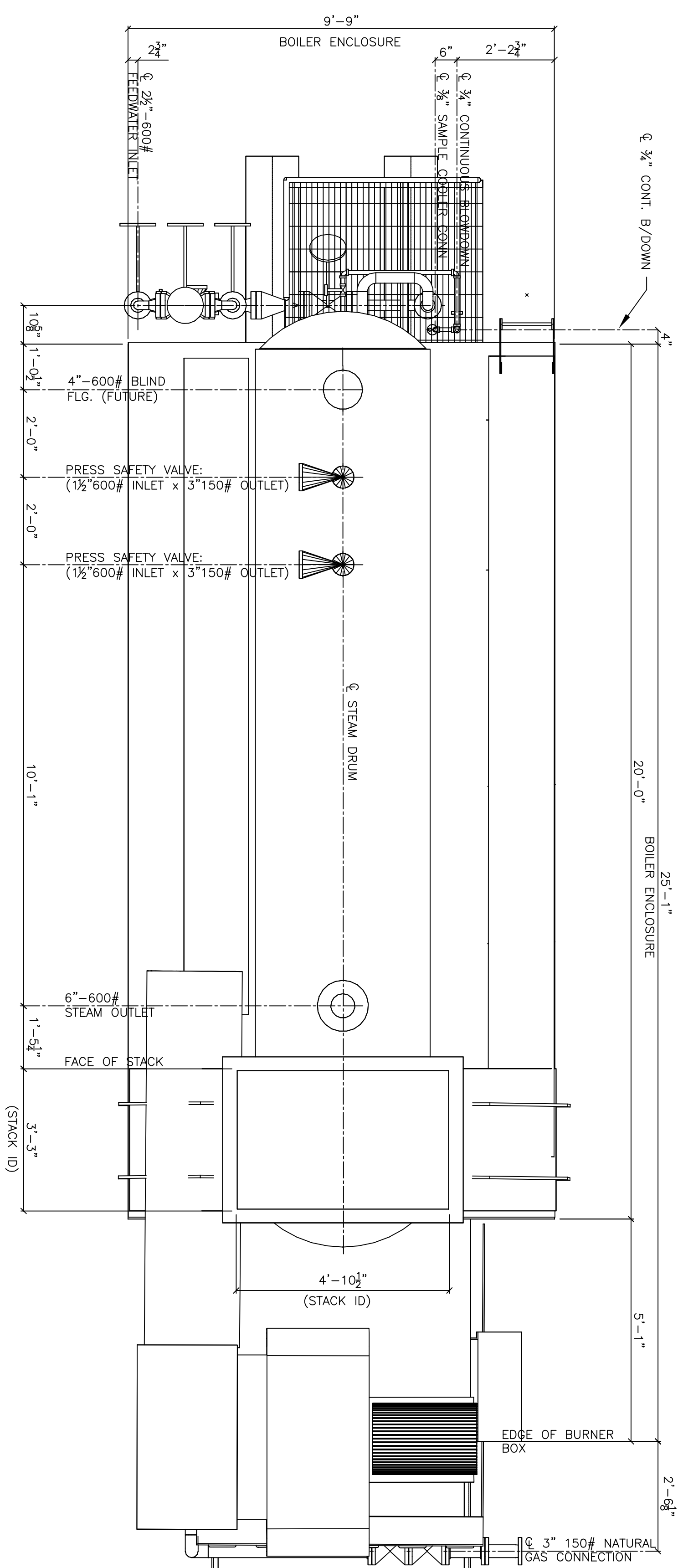


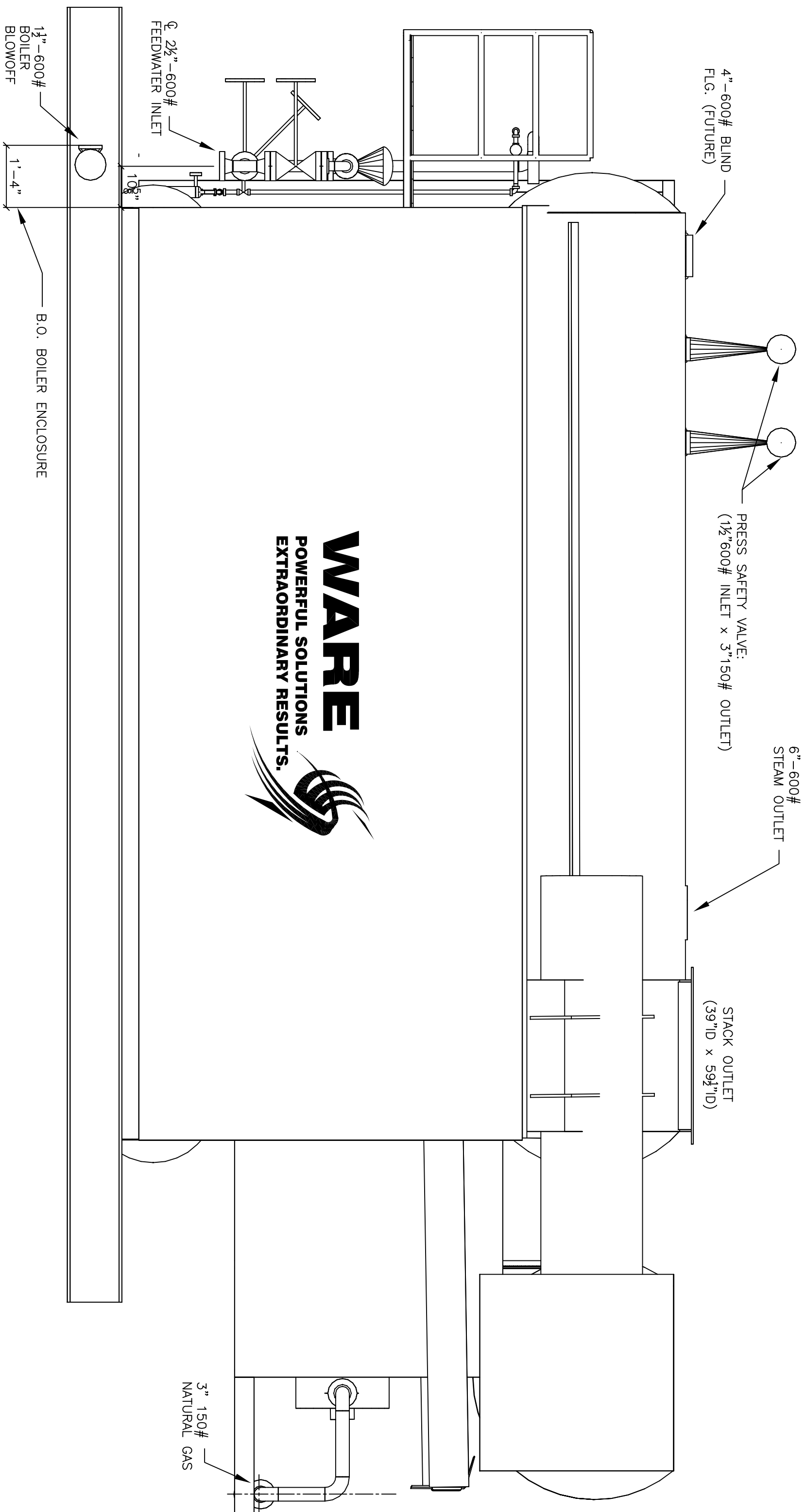
**TARGET END VIEW**  
SCALE 1/2" = 1'-0"



**BURNER END VIEW**  
SCALE 1/2" = 1'-0"



**PLAN**  
SCALE 1/2" = 1'-0"



**SIDE VIEW**  
SCALE 1/2" = 1'-0"

BOILER HEATING SURFACE: TOTAL 4,196 SQ FT  
 CAPACITY: 60,000 LB/HR MAX. CONT.  
 BLOWDOWN: 1%  
 FEEDWATER TEMPERATURE: 212° F  
 DESIGN PRESSURE: 550 PSIG  
 OPERATING PRESSURE: 125-500 PSIG  
 FUELS: NATURAL GAS, NO.2 DIESEL OIL  
 BURNER: JOHN ZINK/TODD COMBUSTION  
 BURNER MANAGEMENT SYSTEM: AUTOFLAME  
 E.D. FAN & DRIVE: 3 HP 60 HZ 480 V 100 HP  
 POWER SUPPLY: N/A  
 WEIGHTS: BOILER SHIPPING - 91,000 LBS  
 INSTALLATION: OUTDOORS



Designed by	Checked by	Approved by - date	Filename 00000000	Date 10/01/2010	Scale 1/2"-1'-0"
-------------	------------	--------------------	----------------------	--------------------	---------------------

<b>WARE</b> POWERFUL SOLUTIONS EXTRAORDINARY RESULTS.	RENTAL BOILER 741 PLAN AND SECTION	Edition 0	Sheet 1
	RB-741		