

PAINT SPECIFICATIONS:

TUBES COVERED WITH REFRACTORY AND OUTER MEMBRANE WALL TUBES TO BE PAINTED WITH CARBOZINC II.  
 BOILER OUTER CASING: CLEAN TO SSPC-SP3 AND PAINT SHERWIN WILLIAMS B50WZ4 KEM BOND HS OFF-WHITE METAL PRIMER (1 CT. 3-4 MIL DFT).  
 SHERWIN WILLIAMS CORDTHANE II B65-200 SERIES OFF-WHITE URATHANE (2 COATS 2-4 MIL DFT/COAT).  
 BOILER FLUE GAS OUTLET IS 304SS AND IS NOT PAINTED. HEADS AND PIPING - HI TEMP BLACK

CASINGS:

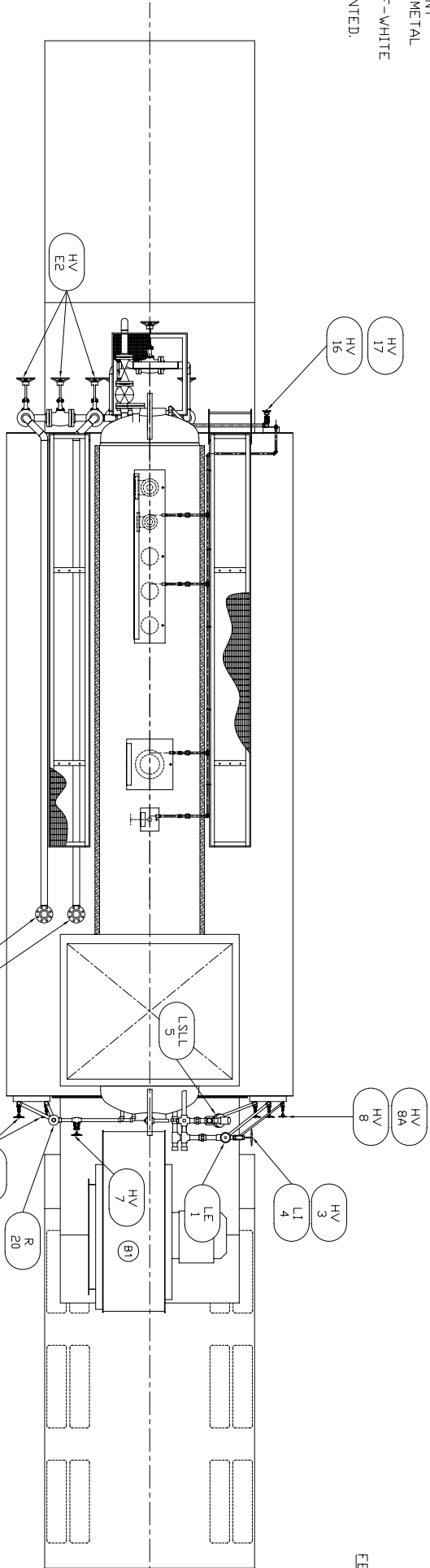
FRONT SEAL & SUPPRT: 1/4" CARBON STEEL  
 PLATE  
 FRONT WALL LAGGING: 12 GA CARBON STEEL  
 REAR CASING: 12 GA CARBON STEEL  
 SIDE : 12 GA CARBON STEEL  
 ROOF: 12 GA CARBON STEEL  
 DRUM: 22 GA CARBON STEEL  
 DRUM HEADS: BARE

DRUMS:

UPPER: SA-516 GR. 70  
 LOWER: SA-516 GR. 70

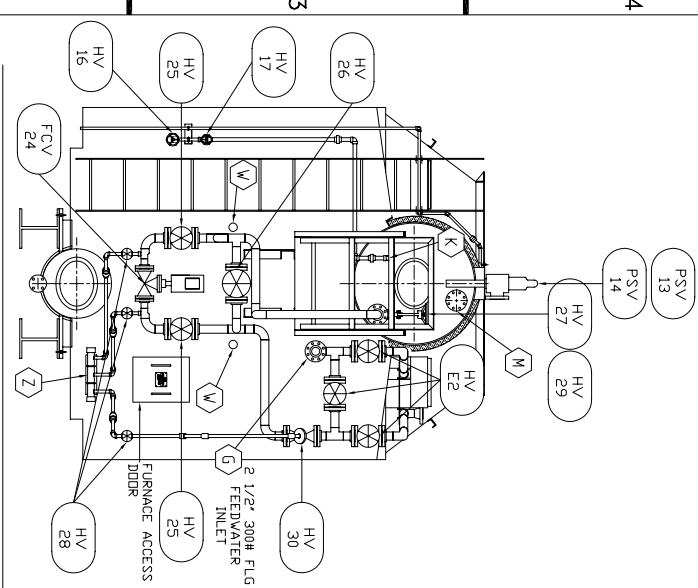
TUBES:

FURNACE MEMBRANE TUBES: 2" x 0.120" WALL  
 SA-178-A ERW  
 CONVECTION BANK TUBES: 2" x 0.105" WALL  
 SA-178-A ERW  
 WELDED FRONT AND REAR WALL: 2" x 0.120" WALL  
 SA-178-A ERW  
 OUTER MEMBRANE WALL: 2" x 0.120" WALL  
 SA-178-A ERW

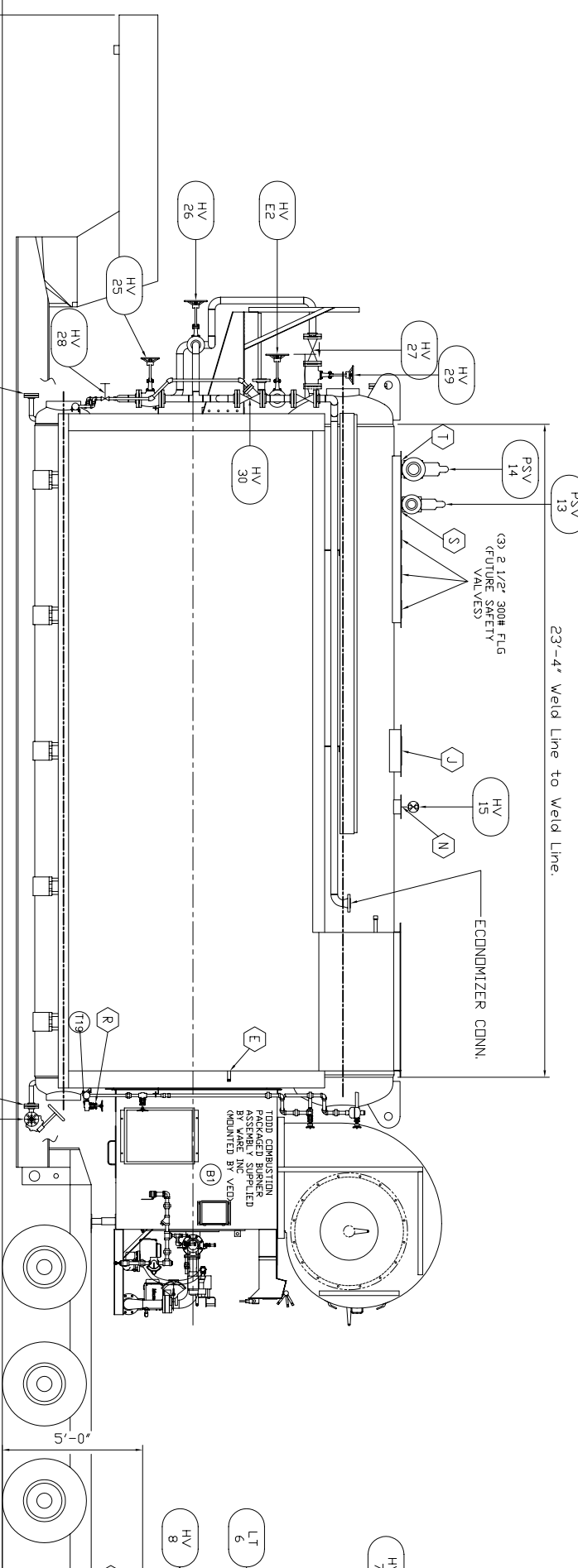


PLAN VIEW

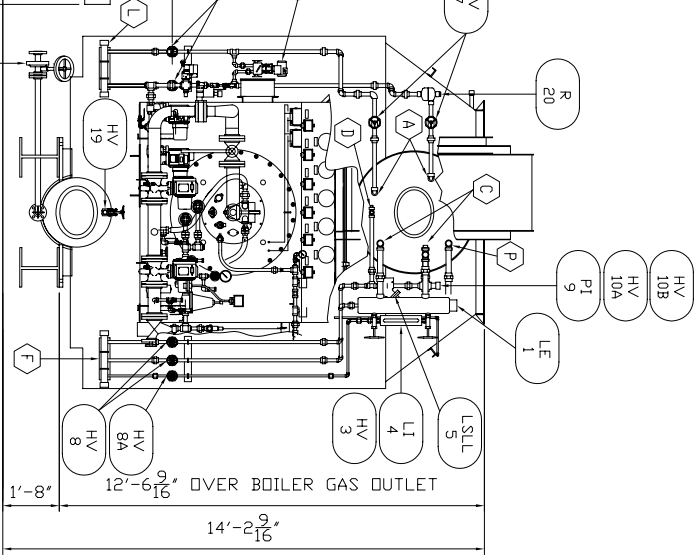
23'-4" Weld Line to Weld Line.



TARGET END VIEW



SIDE VIEW



BURNER END VIEW

MARK	DESCRIPTION	QTY.	SIZE	TYPE
A	DRUM LEVEL TRANSMITTER (CUSTOMER TO SUPPLY)	1	1"	NPT
B	STEAM GAUGE (SUPPLIED BY VENDOR)	1	-	-
C	WATER COLUMN	2	1 1/2"	NPT
D	AUX. LOW WATER CUTOFF	1	1"	NPT
E	FURNACE PRESSURE	1	1"	NPT
F	WTR. COOL. & ALWCOJ DRAIN	1	2"	NPT
G	FEEDWATER INLET	1	2 1/2"	300# RF FLG
H	INSPECTOR'S TEST & DRAIN VALVES (STEAM GAUGED)	1	1/2"	NPT
J	STEAM OUTLET	1	6"	300# RF FLG
K	CONTINUOUS BLOWDOWN	1	1"	NPT
L	D.L.T. DRAIN	1	2"	NPT
M	FUTURE SMOOT BLOWER	1	2 1/2"	300# RF FLG
N	VENT	1	1"	NPT
O	BOILER BLOWOFF	1	1 1/2"	600# RF FLG
R	CHEMICAL FEED	1	1"	NPT
S	PRESSURE SAFETY VALVE	1	2"	300# RF FLG
T	PRESSURE SAFETY VALVE	1	2 1/2"	300# RF FLG

MARK	DESCRIPTION	QTY.	SIZE	TYPE
P	AIDMIZING STEAM	1	1"	NPT
U	AUX BOILER DRAIN (GLIND FLANGED)	1	1 1/2"	300# RF FLG
W	OBSERVATION PORT AIR	2	2"	NPT
Z	FEEDWATER SYSTEM DRAIN	1	2"	NPT

THIS DESIGN OR DRAWING IS NOT SOLD AND IS SUBJECT TO RECALL. REPRODUCTION OR COPYING RIGHTS ARE RESERVED SOLELY TO VICTORY ENERGY SERVICES, LLC. THE DRAWING HAS BEEN DELIVERED AND RECEIVED ON THE EXPRESSED CONDITIONS THAT IT IS NOT TO BE USED IN ANY MANNER THAT COULD BE DEEMED TO BE A VIOLATION OF ANY APPLICABLE LAWS, REGULATIONS, OR STANDARDS. VICTORY ENERGY SERVICES, LLC, SHALL BE RESPONSIBLE FOR THE ACCURACY OF THIS DRAWING AND THAT ALL INFORMATION DISCLOSED BY THIS DRAWING TO THE HOLDER SHALL BE HELD IN CONFIDENCE.

rev	by	date	chk'd	date	description
1	JHAGAR	11/3/05	CL	11/05	ADDED PAID TAGS, REVISED PIPING, AND PAINT SPECS

**VICTORY ENERGY**  
 19701 E. 128th St. North, Collinsville, OR 97031  
 PH: 918-274-0023 FAX: 918-274-0059

cust./proj.#: WARE RENTAL BOILERS / J-VE-356  
 title: GENERAL ARRANGEMENT DRAWING KEYSTONE  
 by: JC Mac chf d. date: 04/01/05  
 scale: 3/8" = 1'-0" date: 01-356-01  
 rev: 1

ONE (1) VICTORY 75K TRAILER MOUNTED STEAM GENERATOR

BOILER HEATING SURFACE:	
TOTAL	4,788 SQ. FT.
CONVECTION	4,080 SQ. FT.
FURNACE	708 SQ. FT.
CAPACITY:	75,000 LB/HR. MAX. CONT.
FEEDWATER TEMPERATURE: 175° F.	
DESIGN PRESSURE: 350 PSIG	
OPERATING PRESSURE: 100-310 PSIG	
FUELS: NATURAL GAS, NO. 2 DIESEL OIL	
BURNER: JOHN ZINK/TODD COMBUSTION	
BURNER MANAGEMENT SYSTEM: CHICAGO BLOWER DR EQUIVALENT BY OTHERS	
COMBUSTION CONTROLS: F.D. FAN & DRIVE	
POWER SUPPLY: 3 PH 60 HZ 480 V	
WEIGHTS: BOILER SHIPPING - 83,000 LBS. OUTDOORS	